

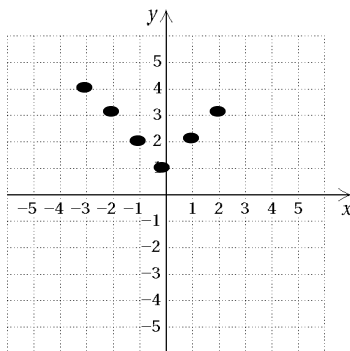
EXTRA PRACTICE 31
Finding Domain and Range
 Use after Section 7.2

Name _____

The solutions of an equation in two different variables consist of a set of ordered pairs. The domain is the set of all first coordinates and the range is the set of all second coordinates.

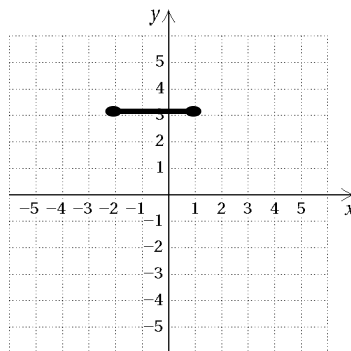
Find the domain and the range of each of the following functions .

1.



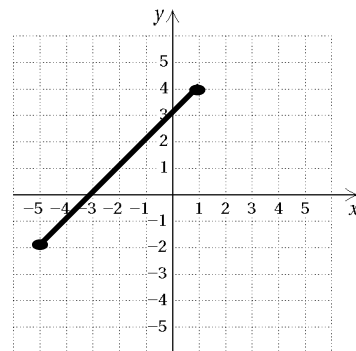
Domain:
Range:

2.



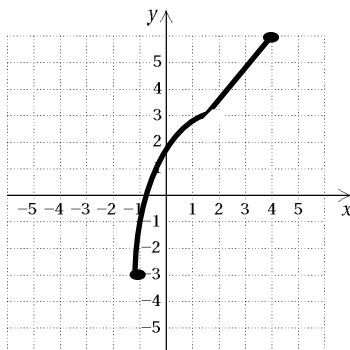
Domain:
Range:

3.



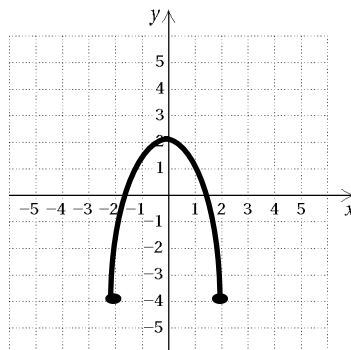
Domain:
Range:

4.



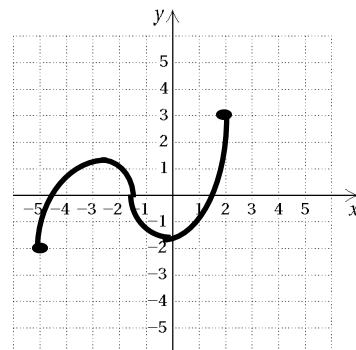
Domain:
Range:

5.



Domain:
Range:

6.



Domain:
Range:

Find the domain.

7. $f(x) = \frac{5}{x-2}$
 10. $f(x) = \frac{4}{6x-5}$
 13. $f(x) = |x-3|$

8. $f(x) = 3-2x$
 11. $f(x) = \frac{x-1}{2x+3}$
 14. $f(x) = \frac{-7}{3+x}$

9. $f(x) = x^2 - 4$
 12. $f(x) = |x| + 1$
 15. $f(x) = x^2 - 4x - 5$